

**Dryflex®**

Thermoplastic Elastomers



# CREATE NEW POSSIBILITIES

Dryflex is a family of Thermoplastic Elastomers (TPEs) developed and produced by HEXPOL TPE. They are designed to add soft-touch appeal, functional performance or product safety features to a range of applications in the consumer, automotive, industrial, packaging and construction markets.

The Dryflex TPE family includes materials that are touchably soft with chemical and abrasion resistance. Materials that are flexible yet durable. Materials that can withstand temperature extremes while retaining their shape and properties. Materials that are quick and easy to process and 100% recyclable. Biobased materials originating from renewable resources.

Dryflex is one of the most comprehensive portfolios of TPEs in the market, with grades based on TPS,

TPO, TPU and TPV technologies. This allows us to provide the best TPE for each application.

We put a high focus on product safety, reliability and consistency. Each of our production sites operate technical centres with specialist equipment to perform diagnostic, processing and quality assurance testing.

By partnering with customers, designers and the end-users of our products we continually advance the properties of the Dryflex TPE family, tailoring compounds to meet specific demands. This versatility opens up additional market opportunities and previously unachievable design possibilities.

**WHAT IS YOUR MATERIAL CHALLENGE?**

# CUSTOMISED SOLUTIONS

Dryflex TPEs are extremely adaptable and versatile. They can be soft, flexible, transparent or coloured. We've engineered grades that are flame-retardant, chemical resistant, conductive, lightweight, antimicrobial, silky-smooth and even water-swellaible. Our teams across the globe are constantly developing new polymer combinations, helping create unique Dryflex TPEs that are lighter, tougher, more durable, more sustainable.

## PROPERTIES INCLUDE:

- Hardness from 20 Shore 00, 0 Shore A to 65 Shore D
- Adhesion to several substrates for 2K applications
- High flexibility
- Food contact grades
- 100% Recyclable
- Biobased grades from renewable resources
- Wide service temperature range
- Conductive and anti-static grades
- Antimicrobial grades
- Resistance to chemicals
- UV stability and weathering resistance
- Touchably smooth and silky grades
- Highly transparent grades
- Grades compliant with industry standards such as RoHS, Toy, FDA, Automotive, Construction
- Abrasion and scratch resistant grades
- Easy to colour



# DRYFLEX AT A GLANCE...

The Dryflex TPE family is constantly evolving, with new products being developed every day. Here we give an overview of some of our most widely used ranges. This does not list all ranges and possibilities, for further information and to download product data and processing guides please visit → [www.hexpolTPE.com](http://www.hexpolTPE.com) ←

RANGE	DESCRIPTION	TYPICAL APPLICATIONS
Dryflex SE	Our standard TPE range for injection moulding	Consumer, automotive, toys, packaging
Dryflex 2K	Adhesion TPEs for multi-component applications	Grips & handles, integrated seals
Dryflex AM	TPEs for automotive mats	Automotive floor mats
Dryflex C	Conductive TPEs	Electrical tools and appliances
Dryflex Cable	Halogen-free TPE compounds for high performance cables	Cable insulation & sheathing
Dryflex CS	TPEs with optimised compression set	Food packaging, gaskets

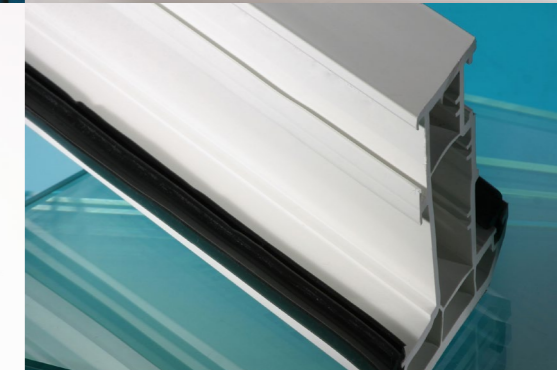
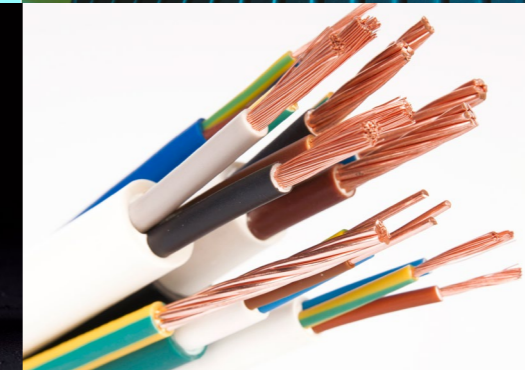
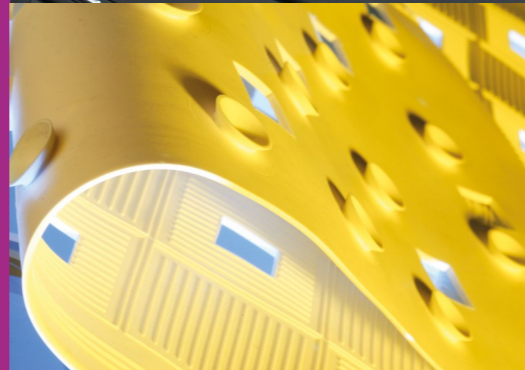
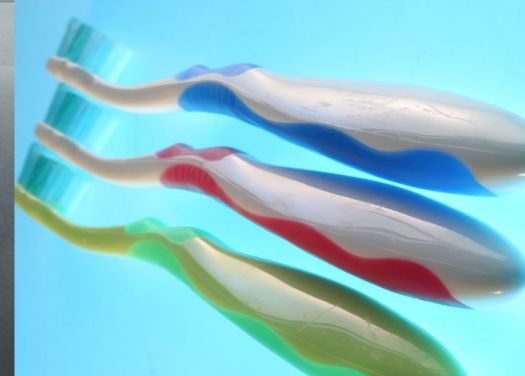
Dryflex DW	TPEs for drinking water applications	Hoses in appliances, showers
Dryflex FLAM	Halogen-free, flame retardant TPEs	Cavity wall sockets, gaskets, railroad
Dryflex Gel	Ultra-soft TPEs	Footwear gel insoles
Dryflex Green	Biobased TPEs from renewable resources	Grips, handles, packaging
Dryflex Interior	Low VOC TPE compounds for automotive interiors	Automotive fascia mats & HVAC components
Dryflex PCW	TPEs based on Post Consumer Recyclate	Automotive exterior e.g. mud-flaps
Dryflex PS	TPEs for pipe seal applications	Pipe joints in waste-water applications
Dryflex T	Crystal clear transparent TPEs	Personal care, food containers, goggles
Dryflex Touch	TPEs with superior haptics	Wearable tech, electronics, packaging
Dryflex TPV	Thermoplastic Vulcanisates	Automotive, construction, appliances
Dryflex TPU	Thermoplastic Polyurethanes	Footwear, industrial, automotive
Dryflex WP	TPEs for window profile applications	Window and door sealing profiles
Dryflex WS	Hydrophilic TPEs	Water-stops, seals, tunnels, water tanks

# APPLICATIONS

Dryflex TPEs are turned into everything from toothbrushes to the latest wearable technology, car mats to glazing profiles, toys to power-tool grips...with new applications being introduced every day.

Our goal is to engineer intelligent solutions which precisely match application requirements, but also to find solutions that meet gaps in the market. This is an exciting task and one which has sent Dryflex TPEs across the globe.

Working hand-in-hand with our customers, we give in the field support and the expertise to engineer solutions that transform their ideas into superior products.



# PRODUCT SAFETY

When working with sensitive applications, the whole supply chain needs to be considered. From sourcing the correct raw materials and suppliers, managing production, traceability and consistency, to the knowledge about the application requirements.

With state-of-the-art compounding and product development facilities, HEXPOL TPE place a strong emphasis on operational excellence. We invest in high-quality compounding technology and supporting sub-systems. Working with quality management standards such as ISO 9001, ISO 14001, ISO 50001 and ISO 13485.

When developing polymer compounds, a deep understanding of regulatory, legal requirements and industry standards is also essential.

We work with industry standards, global and national legislation, such as:

- Food contact legislation
- Toy safety requirements
- RoHS
- REACH
- Automotive and railroad standards
- UL flammability
- Building and construction standards
- ...



# CONTACT US

If you can't see what you're looking for or have any questions, please get in touch at [info@hexpolTPE.com](mailto:info@hexpolTPE.com)

## PLANTS

EUROPE	GERMANY	t +49 9571 94894 0	<a href="mailto:info.de@hexpolTPE.com">info.de@hexpolTPE.com</a>
	SWEDEN	t +46 562 607500	<a href="mailto:info.se@hexpolTPE.com">info.se@hexpolTPE.com</a>
	UK	t +44 161 914 7341	<a href="mailto:info.uk@hexpolTPE.com">info.uk@hexpolTPE.com</a>
ASIA	CHINA	t +86 757 2291 5100	<a href="mailto:info.fsc@hexpolTPE.com">info.fsc@hexpolTPE.com</a>
NAFTA	NORTH AMERICA	t +1 419 626 5677	<a href="mailto:info.na@hexpolTPE.com">info.na@hexpolTPE.com</a>

For contact details of our global teams, offices and partners please visit → [www.hexpolTPE.com](http://www.hexpolTPE.com) ←